

Please bring to school...



Here are a few things we would like your child to bring and keep in school every day:

- Their book bag, contact book and reading book
- Learning Together Journal
- P.E bag
- A suitable coat for the weather
- Wellington boots (cheap pair to put in our welly rack)
- Water bottle



Purple Mash/Mini Mash Online Learning

Each child will be given their own login in September and will be able to access the Mini Mash area of Purple Mash. There are a range of fun activities to support the children with their learning

Teachers & TAs...



The Reception teachers are:

- Mrs Hussain – R3
- Miss Smith – R4

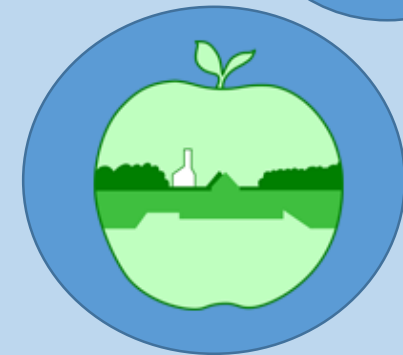
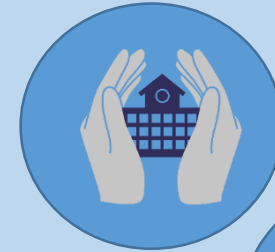
The Reception teaching assistants are:

- Mrs Calow
- Mrs Gibbs

Our Topics...

- Term 1 – Ourselves
- Term 2 – Space
- Term 3 – Bears
- Term 4 – In the Garden
- Term 5 – This is Africa
- Term 6 – Under the Sea

Moving into Reception



Information Booklet for Parents

Learning at Home...



Reading:

Please help us to promote a love of reading by listening to your child read daily. 'Little and often' is key and makes such a positive difference.

Learning Together Journal:

This is an exciting way of sharing with us what your child has been learning and experiencing outside of school.



Foundation Workshops...



We run a number of workshops specifically designed to support parents to help their child with their learning at home. The workshops also develop a better understanding of how much learning is incorporated through play.

Please come and look around the classroom before the workshop and see how your child's learning is progressing. Tea and biscuits will be available during the presentation.

The focus of the workshops are:

- Communication and Language with a focus on Phonics
- Mathematics
- Understanding of the World
- Physical Development
- Expressive Arts and Transition to Year 1

A Typical Day...



8.45am – Early morning activities

9.00am – Teacher led literacy or maths

10.10am – Guided reading or guided maths

10.30am – Snack time

10.45am – Child initiated play (this is when children plan, investigate and review their chosen learning)

11.40am – Phonics

12.05pm – Lunchtime

1.15pm – Quiet reading

1.25pm – Expressive arts/ understanding of the world

2.00pm – Child initiated play

3.00pm – Story time/ assembly