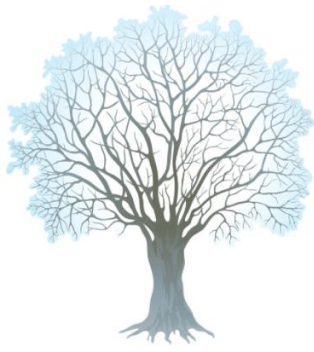


# NEW ASH GREEN SCHOOL NEWS



[www.new-ash.kent.sch.uk](http://www.new-ash.kent.sch.uk)

## JANUARY 2022 NEWSLETTER

Curriculum Core Values - 'Together Everyone Achieves More'

CURIOSITY

RESILIENCE

CHALLENGE

INSPIRATION

INDEPENDENCE

SELF-MOTIVATION

Dear Parents and Carers

Welcome to our January 2022 Newsletter. As we head towards the February half term in a couple of weeks, I sincerely hope that everyone in our school community will be able to enjoy a restful and relaxing break. All the children have worked incredibly hard during this term, which has been helped enormously by the support they have received at home from their parents and carers. This has been particularly noticeable from those families whose children are currently learning at home. Thank you for your support over the last few weeks as the school continues to rise to the challenges of Covid-19. Your continued understanding is hugely appreciated. The last day of Term 3 is **Friday, 11<sup>th</sup> February**. Term 4 will begin on **Monday, 21<sup>st</sup> February 2022**. Kind regards, Mrs C.A. Cain, Headteacher



### Diary Reminders:



#### REMINDER: Kent Health Checks for Year 6 and Reception Children:

**Thursday 10<sup>th</sup> February 2022**

Please be reminded that unless you have opted out of this screening, the following checks will be taking place for all children in Reception and Year 6 as follows:

- **Reception:** Vision Screening and Height and Weight Check.
- **Year 6:** Height and Weight Check only.

**NHS**

Kent Community Health  
NHS Foundation Trust

#### REMINDER: PTA Non-Uniform Day

Last Day of Term:

**Friday 11<sup>th</sup> February 2022**

Children are invited to come into school on this day to mark the last day of term.

A £1 donation from each child will be greatly appreciated to support the school.

Thank you

#### World Book Day

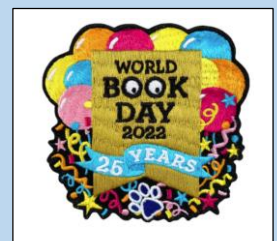
**Thursday**

**3<sup>rd</sup> March 2022**

The theme for this year's World Book Day is:

"You Are a Reader",

Further details will follow after the half term.





**Children's Mental Health Week:**  
**From Monday 7th February 2022**

The theme for this year's Children's Mental Health Week is:  
**Growing Together**

Growing Together is about growing emotionally and finding ways to help each other grow. Challenges and setbacks can help us to grow and adapt. Trying new things can help us to move beyond our comfort zone into a new realm of possibility and potential. However, emotional growth is often a gradual process that happens over time and sometimes we might feel a bit 'stuck'. During the week, the children will be taking part in sessions to further develop this theme.



**Virtual Coffee Morning:**  
**Wednesday 9<sup>th</sup> February 2022**  
**at 9.30am-10.30am**

Please find attached details of a virtual coffee morning which has been arranged by Yasmin, the school's Emotional Well-Being Practitioner (EWT). If you would like to join this coffee morning, then you will need to have access to Microsoft Teams.



**NELFT NHS**  
NHS Foundation Trust

Please find attached a link, which was sent to all parents and carers recently, regarding a survey about the well-being and mental health support the school has in place. If you would like to complete this brief survey, then please click onto the link below:

<https://forms.office.com/Pages/ResponsePage.aspx?id=600GQ77WIEuL6yep6P7LrjgB69V4QGJLifITs91CF1xUNUdPNORUUFY4RUNBOEpZNUICM1E5TTZCWi4u>

Thank you.

**Safer Internet Day:  
Tuesday 8<sup>th</sup> February 2022**



Safer Internet Day is taking place on **Tuesday 8<sup>th</sup> February** and all classes will be taking part in activities during the week to raise the profile on keeping ourselves safe when we are online.

The internet is a fantastic tool for learning, socialising and playing, so it is equally important to make sure that our children have the tools to use it safely, responsibly and respectfully.



**Holiday Club:  
February Half Term**

West Hill Life Ltd, the school's After School provider, will be organising a Holiday Club during the February half term at our school and two other local sites.

If you are interested in using this service, please refer to the attached flyer for further details. Please contact West Hill Life direct on **01322 278 677** to make a booking.

**World Religion Day: Sunday 16<sup>th</sup> January**

Mr Jordan arranged for our Year 5 children to have a Zoom call with a Rabbi for World Religion Day. The children were able to ask questions about his religion, services and the way that he lives his life. He told the children about the origins and history of the Jewish faith. All of Year 5, as well as the staff, thoroughly enjoyed the experience and everyone learnt a huge amount. The children are now completing their follow up work and will be sending some good examples of this to the Rabbi at his synagogue.



**New Ash Green Primary School:  
Boys' Football Team at the County Finals**

After winning the Gravesham Cooke Shield, the school Boys' Football Team went on to the County Finals in Thamesmead. They played against 5 other teams from across Kent. The tournament finished with the boys winning 1 game, drawing 3 games and losing a game. Everyone played very well against some very tough opposition.

The overall winners on the day were from the Orpington District - well done everyone.



## ATTENDANCE PERCENTAGES - JANUARY 2022

R3 - Reception The Peter Rabbits	R4 - Reception The Terrific Tigers	R5 - Year 1 The Claudes	R6 - Year 1 The Squishy Mcfluffs	R1 - Year 2 The Narwhals	R2 - Year 2 The Zogs
91.80%	82.33%	93.03%	95.57%	92.90%	96.42%

B3 - Year 3 The Mechanics	B4 - Year 3 The Paddingtons	B1 - Year 4 The Butterfly Lions	B2 - Year 3 The Firebirds
91.39%	93.00%	89.80%	87.08%

H3 - Year 5 The Percy Jacksons	H4 - Year 5 The Huckleberry Finns	H1 - Year 6 The Joeys	H2 - Year 6 The Malkins
94.12%	92.27%	87.42%	90.07%

The teacher whose class achieved the highest attendance level for the month of **January 2022** is once again

**Miss Brain - R2, Year 2 - (The Zogs)**  
who will be given £50 to spend on new books for the classroom

**WELL DONE TO R2 CLASS!**

### Diary Dates for Remainder of Term 3: 2021/2022

TERM 3 Date	Time	Event
Monday 7 <sup>th</sup> February	All Week	Children's Mental Health Week
Tuesday 8 <sup>th</sup> February	All Day	Safer Internet Day
Wednesday 9 <sup>th</sup> February	9.30am	Virtual Coffee Morning with Yasmin, the school's EWT
Thursday 10 <sup>th</sup> February	Morning	Reception: Vision Screening and Height and Weight Screening Year 6: Height and Weight Screening only
Thursday 10 <sup>th</sup> February	3.30pm	Boys' Home Football Match, New Ash Green Primary School
Friday 11 <sup>th</sup> February	-	Non-Uniform Day for Last Day of Term 3

### Diary Dates for the Start of Term 4: 2021/2022

TERM 4 Date	Time	Event
Monday 21 <sup>st</sup> February	-	Start of Term 4
Thursday 3 <sup>rd</sup> March	All Day	World Book Day - further details to follow
Monday 14 <sup>th</sup> March	All Week	British Science Week.
Friday 18 <sup>th</sup> March	All Day	Red Nose Day - further details to follow
Friday 1 <sup>st</sup> April	-	Non-Uniform Day for Last Day of Term 4

# Academic Term Dates for 2021/2022



## SPRING TERM 2022

INSET DAY	Tuesday 4 <sup>th</sup> January
Term 3	Wednesday 5 <sup>th</sup> January - Friday 11 <sup>th</sup> February
HALF TERM	<b>Monday 14<sup>th</sup> February to Friday 18<sup>th</sup> February</b>
Term 4	Monday 21 <sup>st</sup> February - Friday 1 <sup>st</sup> April
Bank Holidays	Good Friday 15 <sup>th</sup> April and Easter Monday 18 <sup>th</sup> April
EASTER BREAK	<b>Monday 4<sup>th</sup> April - Monday 18<sup>th</sup> April</b>

## SUMMER TERM 2022

Term 5	Tuesday 19 <sup>th</sup> April - Friday 27 <sup>th</sup> May
Bank Holidays	Monday 2 <sup>nd</sup> May
HALF TERM	<b>Monday 30<sup>th</sup> May - Friday 3<sup>rd</sup> June</b>
INSET DAY	Monday 6 <sup>th</sup> June
Term 6	Tuesday 7 <sup>th</sup> June - <b>Thursday 21<sup>st</sup> July*</b> (*Please note date change)

# Academic Term Dates 2022/2023

## AUTUMN TERM 2022

INSET DAYS	Thursday 1 <sup>st</sup> and Friday 2 <sup>nd</sup> September
Term 1	Monday 5 <sup>th</sup> September - Friday 21 <sup>st</sup> October
HALF TERM	<b>Monday 24<sup>th</sup> October - Friday 28<sup>th</sup> October</b>
Term 2	Monday 31 <sup>st</sup> October - Friday 16 <sup>th</sup> December
CHRISTMAS BREAK	<b>Monday 19<sup>th</sup> December - Monday 2<sup>nd</sup> January</b>

## SPRING TERM 2023

INSET DAY	Tuesday 3 <sup>rd</sup> and Wednesday 4 <sup>th</sup> January
Term 3	Thursday 5 <sup>th</sup> January - Friday 10 <sup>th</sup> February
HALF TERM	<b>Monday 13<sup>th</sup> February - Friday 17<sup>th</sup> February</b>
Term 4	Monday 20 <sup>th</sup> February - Friday 31 <sup>st</sup> March
Bank Holidays	Good Friday 7 <sup>th</sup> April and Easter Monday 10 <sup>th</sup> April
EASTER BREAK	<b>Monday 3<sup>rd</sup> April - Friday 14<sup>th</sup> April</b>

## SUMMER TERM 2023

Term 5	Monday 17 <sup>th</sup> April - Friday 26 <sup>th</sup> May
Bank Holidays	Monday 1 <sup>st</sup> May and 29 <sup>th</sup> May
HALF TERM	<b>Monday 29<sup>th</sup> May - Friday 2<sup>nd</sup> June</b>
INSET DAY	Monday 5 <sup>th</sup> June
Term 6	Tuesday 6 <sup>th</sup> June - Friday 21 <sup>st</sup> July

